



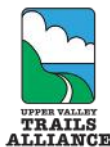
WEST LEBANON GREENWAY

National Park Service: Rivers, Trails & Conservation Assistance Program

An Application From:



Representing a Coalition of Partners:



**More Info - www.WestLeb.org/greenway
February 28, 2021**



WEST LEBANON GREENWAY



March 1, 2021

Helen Mahan, Program Manager
Conservation and Recreation Assistance Collective
NPS, Interior Region 1, North Atlantic-Appalachian
15 State Street, 10th Floor
Boston, MA 02109
Email: ner_rtca@nps.gov

Re: Application for the NPS Rivers, Trails & Conservation Assistance Program

Dear Ms. Mahan,

Enclosed please find our application for the Rivers, Trails & Conservation Assistance Program.

Having been introduced to the program by the Connecticut River Conservancy and learned about the National Park Service's past work with a number of our coalition partners, we are enthused by the opportunity to work with this fantastic program. An initial Zoom call with Lelia Mellen and Jennifer Waite further informed our application, and increased our interest in collaboration with the National Park Service.

We have attached the completed application, letters of support from Project Partners, and maps showing the overall Greenway and particular pieces of the puzzle. Additionally, we would like to include two online resources that include additional information and resources about the West Lebanon Greenway:

www.WestLeb.org/greenway

This website is intended as a central location for all West Lebanon revitalization efforts, including the West Lebanon Greenway and the Westboro Yard project. It has not yet been launched publicly, but we are including a preview of it to inform our application. The password is: help

<https://arcg.is/10SfP4>

This "Story Map" of the overall project takes a step-by-step look at the proposed West Lebanon Greenway corridor.

If there is any additional information we can provide, or any questions we can answer, please do not hesitate to contact either of us as we will be actively involved in all coalition efforts.

Sincerely,

Angela McCanna
Board Member
Friends of River Park
angela@friendsofriverpark.org

Chet Clem
President
Lyme Properties
chet@lymeproperties.com



Mink Brook Nature Preserve

Dartmouth Hitchcock Medical Center

Wilder Dam

Boston Lot Rec. Area

River Park

Dartmouth Landmark Parcel

Portsmouth Walk

Downtown West Leb

Nature Walk Trailhead

Westboro Yard

Ironhorse Extension

Seminary Hill Sidewalk

Mascoma River Greenway



EXISTING TRAIL NETWORKS

The Mascoma River Greenway (MRG) connects from the Northern Rail Trail to its current terminus at Route 4.



PROPOSED TRAIL EXTENSIONS

Long-planned extensions through Ironhorse Development and the former Westboro Yard parcel.



THE MISSING LINKS

Private land-ownership is being navigated via existing right-of-ways, negotiated easements, and willing landowners.



INTERIM SOLUTIONS

Utilizing existing sidewalks to provide interim connections while the longer-term solutions are worked out.



Three Routes: MRG to Downtown West Leb - 2019 Thayer Study



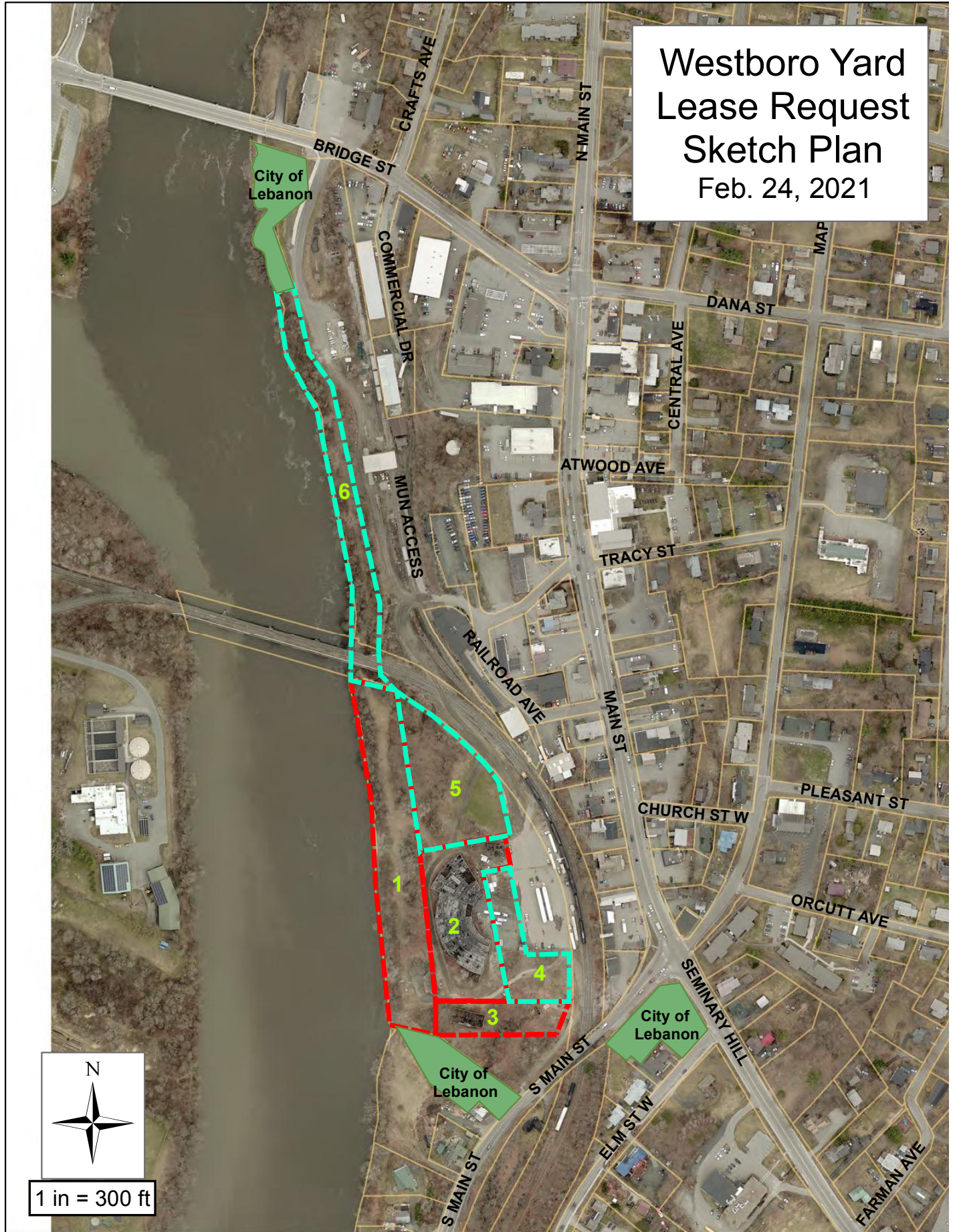


Westboro Yard Trail Corridor - 2004 Vision



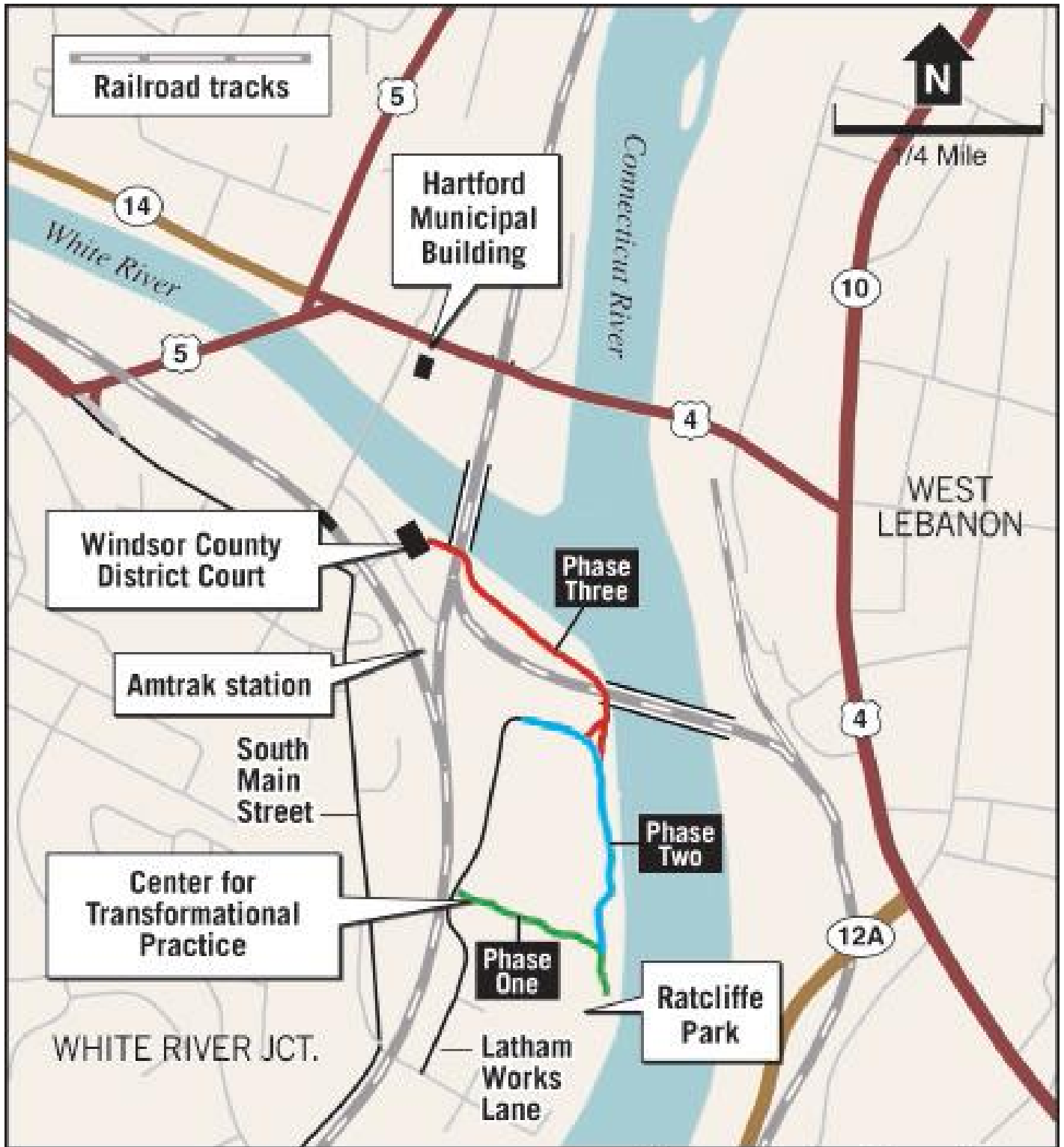


Westboro Yard
Lease Request
Sketch Plan
Feb. 24, 2021



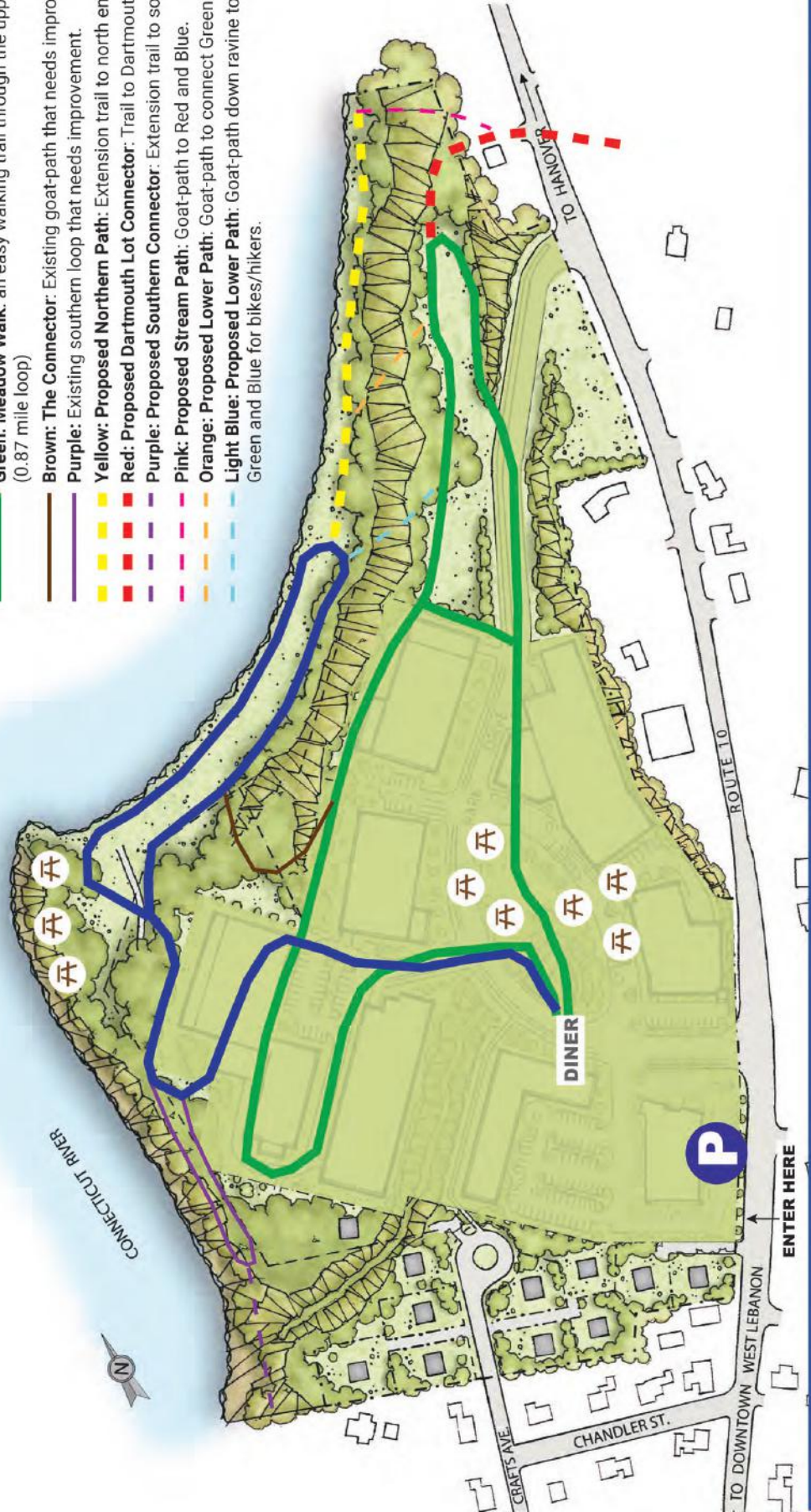


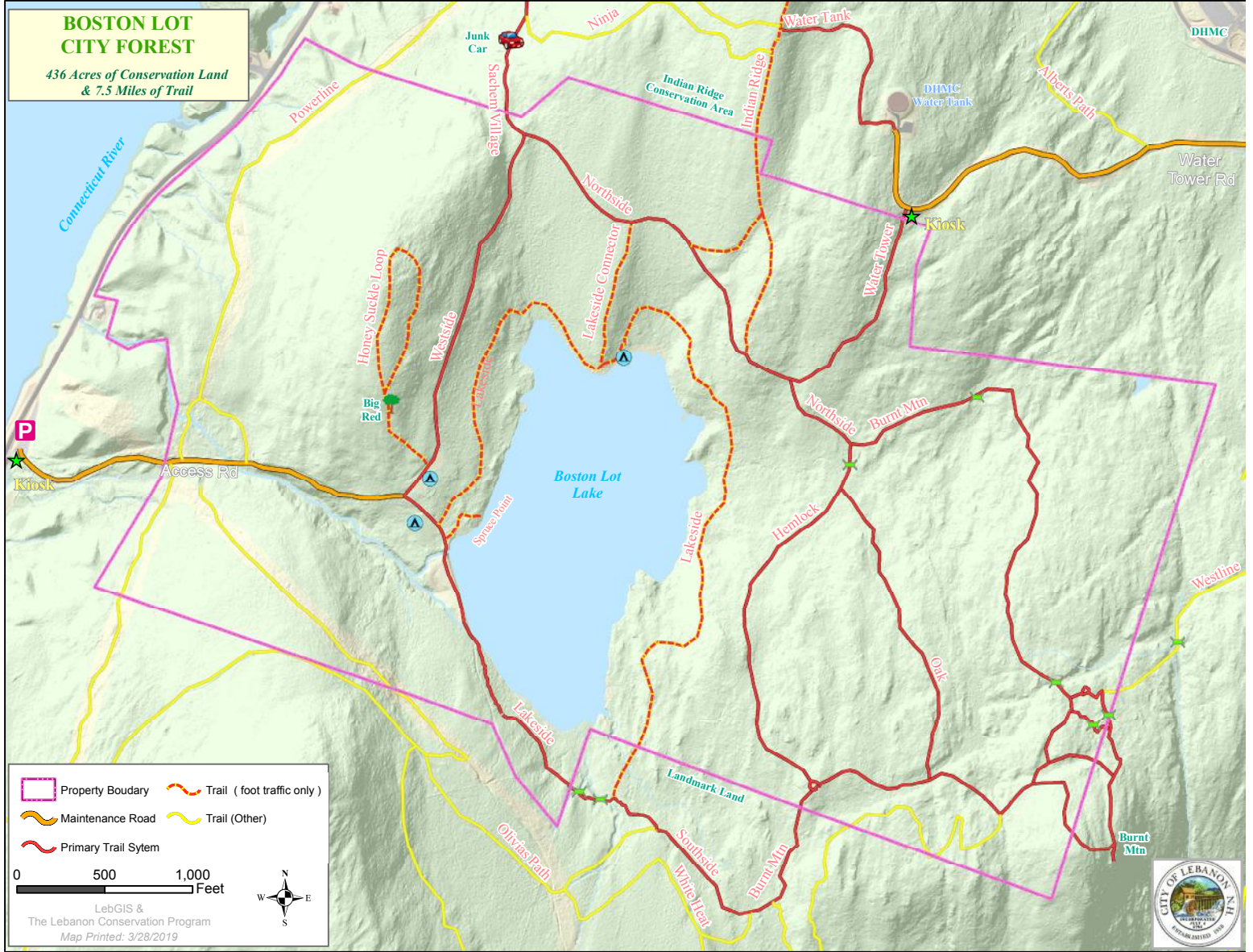
Hartford Riverwalk - Proposed Trail Network



WALKING TRAILS AT RIVER PARK

- Blue: Riverfront Trail:** a meandering path to the Connecticut River waterfront. (0.94 mile loop)
- Green: Meadow Walk:** an easy walking trail through the upper parcel. (0.87 mile loop)
- Brown: The Connector:** Existing goat-path that needs improvement.
- Purple: Existing southern loop** that needs improvement.
- Yellow: Proposed Northern Path:** Extension trail to north end.
- Red: Proposed Dartmouth Lot Connector:** Trail to Dartmouth land.
- Purple: Proposed Southern Connector:** Extension trail to south end.
- Pink: Proposed Stream Path:** Goat-path to Red and Blue.
- Orange: Proposed Lower Path:** Goat-path to connect Green and Blue.
- Light Blue: Proposed Lower Path:** Goat-path down ravine to connect Green and Blue for bikes/hikers.





https://www.vnews.com/Coalition-forming-to-build-trail-through-West-Lebanon-38929827

Thursday
FEBRUARY 18, 2021
\$1.50
Volume 89 — NUMBER 204

VALLEY NEWS

THE NEWSPAPER
OF THE
UPPER VALLEY
Copyright ©2021 Valley News

www.vnews.com

GEAR EXCHANGE

VALLEY NEWS
EMERIL WELCH
After
retrofitting a
different pair
of skis from
her car
because of
the icy
conditions,
Amelia Fish,
of South
Royden,
heads down
a hill with
her dog
Wade in
Tandridge
on Wednesday.
Fish said
the skis she
trails about
once a week.



CORONAVIRUS

Dartmouth applications at record high

College dropped requirement
for standardized testing
during pandemic

By NORA DOWLE-DUNN
Valley News Staff Writer

HANOVER — Amid the ongoing
COVID-19 pandemic, Dartmouth
College received an all-time
high of more than 38,000 ap-

pligrade applications this
year, according to the school.
Undergraduate applications to
Dartmouth are up 31% over the
prior year, while applications for
graduate programs also were up
about 30%. Dartmouth President
Joseph Holiba said in a virtual
news conference on Feb. 15.
The college attributed the
jump in applications to its digital

recruitment initiatives, as well as
the pandemic-related decision to
cancel the college's standardized
testing requirement for one year
and Dartmouth's promise to
assist the financial need of ac-
cepted applicants. Admission
decisions are set to be released
on April 4.
On Wednesday, Holiba an-
nounced that the college will not
reduce its travel policies this sum-

mer, as study abroad programs
will not take place. During an-
other virtual community conver-
sation, Holiba attributed this de-
cision to the success of the new
one-year testing waiver, as well as
emerging more-collective vari-
ants of the coronavirus that
resurfaced COVID-19. He said he was
"hopeful" that travel programs
will return in the fall.
SEE DARTMOUTH 41

Communities adjust floor meetings

By JOHN P. GREGG
Valley News Staff Writer



TOWN MEETING
www.vnews.com
3/18/2021 12:21

ORANGE, N.H. — Most New Hamp-
shire towns in the Upper Valley will
have town meetings held on Tuesday
this week, but some are adjusting
their floor meetings while abiding by
COVID-19 safety precautions.
The town of Orange, population 208,
will hold a town meeting on Tuesday
at 7 p.m. at the town hall, from 11 a.m. to 7 p.m. at

the Orange Town House. But it is mov-
ing its floor meeting on the following
day at 7 p.m. to the Mountain Valley
High School auditorium in the
neighboring town of Cannon.
Orange Selectboard Chairman
Dorely Hesterich said the Town
House, which dates to 1998, is too small
to handle the expected 40 to 60 atten-
dees while observing social distancing.
"We didn't know if we would exceed
the number of people we could safely
have according to restrictions, so we

had to look for a larger location," she
said. Per state law, since the meeting is
being held out of town, Orange will offer
a ride via school bus for those who need
it, and masks are required both on the
bus and at the meeting.
Hesterich said town officials re-
jected the idea of trying to do the floor
meeting which covers the budget, legal
reserve funds and the like online.
"We would have had to have someone
become some residents would be
able to see the meeting, so we
SEE TOWN MEETING 41

Group plots out direction for trail

Greenway would extend
along Connecticut River

By TIM CAMERATO
Valley News Staff Writer

WEST LEBANON — A coalition of city
officials, nonprofits and local businesses
is seeking to break through years of gridlock
and expand the Mascoma River Greenway
through West Lebanon.

At issue is how to link the greenway,
which runs along an old rail trail, to newly
created trails paralleling Route 10 and the
Connecticut River without having to rely on
the Twin State Sand and Gravel site, which
is served by the rail line but whose owners
have not been able to redevelop the prop-
erty quickly as they had hoped.

The group, headed by the city's West
Lebanon Recreation Advisory Commit-
tee, plans to advocate for a "West Lebanon
Greenway" that could encompass several
noncontiguous hotspots in the area.

The multi-use path would link up with
the existing greenway near its terminus on
Glen Road. From there, it would make
through downtown West Lebanon, the
Southern Rail Yard and River Park, then
run north to the Boston Lot.

Advocates acknowledge that the effort
won't be easy and will likely require lobby-
ing lawmakers and state legislators to en-
act new laws. But they argue, change is
necessary to complete the vision of a city-
wide network of trails that dates back more
than two decades.

"I think we know the desire is there. We
know the interest from the public is there.
We need to reactivate that," Chief Clem,
a member of the West Lebanon committee,
said during a meeting last week.

Clem, president of Legno Properties and
son of developer Daniel Clem, previously
worked to preserve 6 acres of land within
his father's 28-acre River Park develop-
ment for public use as trails about the
river.

Over the last month, he said, that mis-
sion has expanded to garnering support for
a larger system of trails that would link up
with the River Park parcel.

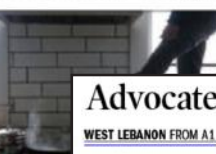
SEE WEST LEBANON 41

Power grid isn't prepared for climate change

By LAMMY BOTS
Los Angeles Times

When a fire blasted through
California homes and
businesses last power for sev-
eral hours last summer, Texas
Sen. Ted Cruz wrote that the
Golden State "is now unable to
perform even basic functions
of civilization, like having reli-
able electricity."
What Texas has experi-
enced over the last few days
was far worse.

simultaneously freezing much
of the energy infrastructure
that would normally keep peo-
ple warm. Rolling blackouts
began in the wee hours of
Monday morning and contin-
ued into Tuesday evening.
At least 39 people were re-
ported dead in states related
incidents in the eastern half of
the country, including several
in Texas — and experts said it
was all but certain that the
death toll would rise. Harris
County, home to Houston, re-



VOICE OF AMERICAN CONSERVATISM

Talk radio titan Rush Limbaugh dies

By DORANY PINEDA
Los Angeles Times

Rush Limbaugh, the con-

servative talk show host,
died Tuesday at age 70.
He was a conservative
talk show host. Extremely gen-
erous. Politically. Con-

Advocates push to extend Mascoma River Greenway into West Lebanon

WEST LEBANON FROM A1

10 and the Connecticut River
and provide greater pedestrian
access to West
Lebanon.

So far, Clem has drawn
support from groups like the
city's Recreation and Parks
department, the Upper Valley
Trails Alliance and the Upper
Valley Mountain Bike Associ-
ation, with more organiza-
tions expected to lend their
expertise.

Together, he said, they
would work to build on
"where the Mascoma River
Greenway access story
stops right now."

The greenway, a roughly
2.5-mile, paved multipurpose
path that connects downtown
to the larger 58-mile North-
ern Rail Trail, was initially en-
visioned as a larger trail that
would someday connect to
Lyman Bridge, carrying
Route 4 into White River
Junction.

However, several factors
have prevented that from be-
coming a reality, including de-
lays and setbacks for a major
development at the Twin
State Sand and Gravel site
that would have provided a
link between Lebanon's
neighborhoods.

From Glen Road, the
Greenway trail was supposed to
travel through Iron Horse
Park — which was proposed
as 660,000 square feet of re-
tail, office and industrial

space — before connecting to
Seminary Hill Road.

But the 12-year-old devel-
opment project never fully
got off the ground and is en-
tangled in a lawsuit against the
Lebanon Planning Board,
which declined to provide an
extension that developers
needed to continue work.

Other alternatives, such
as traveling alongside exist-
ing railroad tracks, have been
shot down by state officials
even though there's still high-
demand to extend the green-
way.

A recent study of nearly
900 people found a lack of
connection to West Lebanon
to be the second most-cited
factor discouraging people
from using the greenway, af-
ter Glen Road traffic and
safety. When respondents
were given 100 "Greenway
Bucks" to spend on improve-
ments, a West Lebanon ex-
pansion ended up being the
top pick.

Clem cited those re-
sponses when he told the
West Lebanon committee last
week that it can no longer
wait for Iron Horse Park or
the city's proposed lease of
the historic Westboro Rail
Yard to be completed before
moving forward.

"We've been doing that for
a while and so I think the fo-
cus is 'How can we get people
out on these trails?'" he told
the group.

He proposes to utilize

sidewalks along Seminary
Hill, aka Route 4, to get
pedestrians and cyclists to
West Lebanon. But even if
that happens, any trail then
paralleling Route 10 heading
north would require the city
to arrange easements
through private property and
could even require the help of

Great River Hydro LLC,
owner of the Wilder Dam.

"It's going to be hard to get
that done," Lebanon Recreation
Director Paul Coats said of
the effort on Wednesday,
adding the city spent years
trying to overcome greenway
expansion challenges.

However, Coats called the

coalition's formation "excit-
ing" and hoped it would at
least provide another avenue
to address those issues.

During last week's meet-
ing, city officials said they are
lining up studies that they are
grant money that could aid fu-
ture trail expansion. Clem

also encouraged them to
think of fundraising and vol-
unteer options.

"People want actionable
steps. They want to feel like
they can do something," he
said.

Tim Camerato can be
reached at tcamerato@vnews.com or 603-727-3223.



LEBANON RECREATION & PARKS DEPT

51 North Park Street
Lebanon, NH 03766
(603) 448-5121
LebanonNH.gov/Recreation



February 26, 2021

Helen Mahan, Program Manager
Conservation and Recreation Assistance Collective
Interior Region 1, North Atlantic-Appalachian
15 State Street, 10th Floor
Boston, MA 02109
Email: ner_rtca@nps.gov

Commitment letter in support of *Friends of River Park* application for the NPS Rivers, Trails & Conservation Assistance Program

Dear Ms. Mahan,

Please accept this letter on behalf of the City of Lebanon in support of the application by the *Friends of River Park* for the National Park Service's 2021 Rivers, Trails & Conservation Assistance program.

The City of Lebanon has a rich history of working with Lelia Mellen and the assistance program as the primary applicant on the Mascoma River Greenway (MRG) Project, and as contributors with the HEAL NH Active Recreation Project. We collectively relished in the success of the MRG, and now the City is enthusiastic about joining Friends of River Park and the growing list of project partners' effort to extend the reach of the MRG through West Lebanon. Having multiple stakeholders in an effort of this magnitude is key to its success, and public support is strong as indicated in the results of the recent survey conducted by the Upper Valley Lake Sunapee Regional Planning Commission.

The City of Lebanon and State of New Hampshire recently reached an important agreement to initiate the necessary demolition efforts at the former Westboro Rail Yard, a critical first-step towards carrying the success of the Mascoma River Greenway throughout downtown West Lebanon. We consider this to be among the City's top 3 transportation/recreation related projects and we will continue to contribute our expertise, experience, and organizational capacity towards the effort.

Lelia's work contributed to the long term success of the MRG, and we believe it would be immensely gratifying to her, the NPS, the City, Friends of River Park, and all of our coalition partners to extend the success story through West Lebanon.

Sincerely,

Paul Coats
City of Lebanon, Recreation & Parks Director
Paul.Coats@LebanonNH.gov 603-448-5121



2/26/2021

Helen Mahan, Program Manager
Conservation and Recreation Assistance Collective
Interior Region 1, North Atlantic-Appalachian
15 State Street, 10th Floor
Boston, MA 02109
Email: ner_rtca@nps.gov

Commitment letter in support of *Friends of River Park* application for the NPS Rivers, Trails & Conservation Assistance Program

Dear Ms. Mahan,

The Upper Valley Lake Sunapee Regional Planning Commission (UVLSRPC) is in support of the application by the *Friends of River Park* for the National Park Service's 2021 Rivers, Trails & Conservation Assistance program.

UVLSRPC is pleased to be one of the long-standing project partners in the growing coalition of stakeholders working towards the long-planned Greenway through West Lebanon, NH.

The City of Lebanon and State of New Hampshire recently reached an important agreement to initiate the necessary demolition efforts at the former Westboro Rail Yard, a critical first-step towards carrying the success of the Mascoma River Greenway throughout downtown West Lebanon. A coalition of city officials, nonprofits and local businesses has formed to help guide these efforts, and we would benefit greatly from the assistance of the National Park Service.

Friends of River Park, a New Hampshire not-for-profit, now owns a 6-acre parcel along the Connecticut River that represents ½ a mile of river frontage and trails and is one critical piece of the larger connectivity puzzle. They are a member of the coalition and have agreed to be the applicant for this program. UVLSRPC looks forward to working with *Friends*, and other stakeholders, to take big steps this year towards achieving this critical recreational connectivity opportunity that will connect downtown West Lebanon with the Connecticut River and our regional trail network.

Not only is this project a key recreation project in the region, it is a critical piece to a larger puzzle of connecting West Lebanon to Lebanon to 58 miles east in Boscawen via the Mascoma River Greenway and Northern Rail Trail. This project and key connection is of regional significance and is outlined in both UVLSRPC's Regional Plan and Regional Corridor Transportation Plan.

As the project proceeds the specific responsibilities of each group will become better defined, but UVLSRPC will continue to contribute our expertise, past experience, and organizational capacity to these efforts.

Sincerely,

Meghan Butts, Executive Director
Upper Valley Lake Sunapee Regional Planning Commission
mbutts@uvlsrpc.org



**UPPER VALLEY
TRAILS
ALLIANCE**

UVTA Staff
Russell Hirschler
Executive Director

Sean Ogle
Trail Programs Director

Randy Richardson
Development Director

Kaitie Eddington
Program Manager

Board of Directors

Beth Krusi, Chair
Consultant

Dennis Stern, Vice Chair
Resident, Lyme, NH

Richard Synnott, Treasurer
Active Entities Consulting

Vic Henningsen, Secretary
Resident, Theford Center, VT

David Bartlett
Winrock Advisors Limited

Lucy Gibson
Toole Design

Karen Kaliski
Marketing Manager

Matt Oscadel
Mascoma Bank

Kelli C. Pippin
Alice Peck Day Memorial Hospital

Gus Southworth
Retired, Enfield Resident

Natalie Starr
DSM Environmental Services

Tobin Krieg
Akask Srivastava
Revers Fellows
Tuck School of Business
at Dartmouth

Advisors

Jeff Balch
David Hooke
Kiki Keating
Dick Mackay
Lelia Mellen
John Morton
Kevin Peterson
Craig Sanborn
Peter Stein

Upper Valley Trails Alliance – People, Paths, Possibilities

P.O. Box 1215, Norwich, VT 05055 Phone: 802.649.9075 www.uvtrails.org

February 26, 2021

Helen Mahan, Program Manager
Conservation and Recreation Assistance Collective
Interior Region 1, North Atlantic-Appalachian
15 State Street, 10th Floor
Boston, MA 02109

Dear Ms. Mahan,

I am writing on behalf of the Upper Valley Trails Alliance (UVTA) in support of the application by the *Friends of River Park* for the National Park Service's 2021 Rivers, Trails & Conservation Assistance program.

UVTA is pleased to be one of the project partners in the growing coalition of stakeholders working towards the long-planned Greenway through West Lebanon, NH as was recently reported in the *Valley News*: "Group plots direction for trail through West Lebanon." <https://www.vnews.com/Coalition-forming-to-build-trail-through-West-Lebanon-38929827>

The City of Lebanon and State of New Hampshire recently reached an important agreement to initiate the necessary demolition efforts at the former Westboro Rail Yard, a critical first-step towards carrying the success of the Mascoma River Greenway throughout downtown West Lebanon. A coalition of city officials, nonprofits and local businesses has formed to help guide these efforts, and we would benefit greatly from the assistance of the National Park Service.

Friends of River Park, a New Hampshire not-for-profit, now owns a 6-acre parcel along the Connecticut River that represents ½ a mile of river frontage and trails and is one critical piece of the larger connectivity puzzle. They are a member of the coalition and have agreed to be the applicant for this program. UVTA looks forward to working with *Friends*, and other stakeholders, to take big steps this year towards achieving this critical recreational connectivity opportunity that will connect downtown West Lebanon with the Connecticut River and our regional trail network.

As the project proceeds the specific responsibilities of each group will become better defined, but UVTA will be contributing our expertise, past experience, and organizational capacity to these efforts.

Sincerely,

Russell Hirschler
Executive Director



2/26/2021

Helen Mahan, Program Manager
Conservation and Recreation Assistance Collective
Interior Region 1, North Atlantic-Appalachian
15 State Street, 10th Floor
Boston, MA 02109

Re: *Friends of River Park (NH)* application

Dear Ms. Mahan,

I am writing in support of Friends of River Park's application to the National Park Service's 2021 Rivers, Trails & Conservation Assistance (RTCA) program for the West Lebanon Greenway.

Rails-to-Trails Conservancy (RTC) is pleased to be one of the project partners for this long-planned Greenway through West Lebanon, New Hampshire. The project is gathering significant support and was featured in this recent news article that describes it and the stakeholders well - *Valley News*: "Group plots direction for trail through West Lebanon." <https://www.vnews.com/Coalition-forming-to-build-trail-through-West-Lebanon-38929827>

As a critical first step, the City of Lebanon and State recently reached an important agreement to initiate the necessary demolition efforts at the former Westboro Rail Yard. This will insure in time the connection to the Mascoma River Greenway and downtown West Lebanon. This step could only come after city officials, nonprofits and local businesses has united around the effort and formed the necessary coalition to move the larger project forward. RTCA's assistance will provide much needed technical assistance and distinction that only the nation's natural resource and recreation leader can provide.

Rails-to-Trails Conservancy is working with the Friends of River Park and the wider coalition since this first ½ mile of river trail is a strategic link in the completion of the 1100-mile New England Rail-Trail Network vision just recently released. The Friends have joined in support of the vision and briefed our 35-person working group on their progress as recently as this week. Completing it will spur completion north to the CT River Bicycle Byway and connect east to the 58-mile Northern Rail-Trail. I have had the pleasure to visit the site and the Lebanon area several times in the last two years in my work with local trail groups, the towns and the regional MPO. Rails-to-Trails Conservancy will continue to support this project and the larger coalition as they complete this vital recreational connection.

Sincerely,

A handwritten signature in black ink that reads "Tom Sexton".

Tom Sexton
Northeast Regional Director



Rivers, Trails & Conservation Assistance Program Feb. 26, 2021
National Park Service
U.S. Department of the Interior

Gentlemen, The Friends of the Northern Rai Trail in Grafton County is excited to learn of the application for funding by the Friends of River Park for trail creation along the Connecticut River. The concept fits in with the overall long-term plan to connect downtown Lebanon to West Lebanon and ultimately to White River Jct. Vermont.

The demand for outdoor recreation for people of all ages has grown enormously due to C19 virus. This interest will continue and likely intensify as more members of the public become aware of trails like the one proposed by the River Park group. We enthusiastically support their application.

Yours sincerely,

Dick Mackay
Chair

Friends of the Northern Rail Trail in Grafton County



Connecticut River Joint Commissions

10 Water Street, Suite 225

Lebanon, NH 03766

(603) 727-9484

<http://www.crjc.org>

VIA ELECTRONIC FILING

Helen Mahan, Program Manager
Conservation and Recreation Assistance Collective
NPS, Interior Region 1, North Atlantic-Appalachian
15 State Street, 10th Floor
Boston, MA 02109

Email: ner_rtca@nps.gov

Re: Support for Friends of River Park application for the NPS Rivers, Trails & Conservation Assistance Program

March 1, 2021

Dear Ms. Mahan,

I am writing on behalf of Connecticut River Joint Commissions (CRJC) in support of the application by the Friends of River Park for the National Park Service's 2021 Rivers, Trails & Conservation Assistance program. One of the purposes of the CRJC is to protect and preserve the visual, ecological and agricultural integrity of the Connecticut River Valley while planning for and guiding the development of the recreational, tourist, commercial and residential uses.

The CRJC have facilitated coordination of plans, programs, and projects since 1989 and this proposed recreational opportunity to connect downtown West Lebanon with the Connecticut River and our regional trail network is entirely consistent with our objective to increase public access to the river waterfront. The CRJC Connecticut River Recreation Management Plan, published in May 2008 and updated in May 2013, represents years of work by many stakeholders and establishes long-term recreational goals, including land-based-recreation.

The Connecticut River Joint Commissions appreciate the level of effort put forth by the applicant, Friends of River Park, in collaborating with stakeholders on the West Lebanon Greenway: a multi-use trail running alongside the Connecticut River and connecting similar existing (and proposed) publicly

accessible trail networks in Lebanon, White River Junction, VT, Hanover, NH, and beyond. The West Lebanon segment is a critical missing link in the New England Rail Trail Network, and will serve to connect the existing Rail Trail to the Connecticut River Scenic Byway and bicycle route. We anticipate this project will eventually tie in with the Mascoma River Greenway (MRG), Northern Rail Trail (NRT) corridor and other riverside trails throughout the Connecticut River Valley.

The demand for recreation continues to grow, and opportunities to meet this demand have been thoughtfully identified, proposed, and developed by local municipalities, stakeholder groups, and non-profit organizations. The National Blueway designation, Silvio Conte National Wildlife Refuge and the Connecticut River Paddlers' Trail are three such opportunities.

The CRJC unequivocally supports this application; if you have any questions or need additional information, we encourage you to contact (LChute@sullivancountynh.gov).

Sincerely,



Lionel Chute, President
Connecticut River Joint Commissions

c: Friends of River Park, chet@lymeproperties.com



Connecticut River Conservancy

Clean water. Healthy habitat. Thriving communities.

15 Bank Row, Greenfield, MA 01301
413.772.2020 · www.ctriver.org

March 1, 2021

Helen Mahan, Program Manager
Conservation and Recreation Assistance Collective
Interior Region 1, North Atlantic-Appalachian
15 State Street, 10th Floor
Boston, MA 02109

Via email: ner_rtca@nps.gov

Re: Letter in support of Friends of River Park application for the NPS Rivers, Trails & Conservation Assistance Program

Dear Ms. Mahan,

The Connecticut River Conservancy (CRC) is a 501(c)3 organization dedicated to advocating for the protection of the Connecticut River and its watershed. Since 1952, CRC has been the principal voice for improving the quality of life for all inhabitants of this vital New England watershed. CRC's vision of both economic and ecological abundance informs our work to collaborate, educate, organize, restore, and intervene to preserve the health of the entire Connecticut River watershed, including its tributaries for generations to come.

To that end, CRC actively advocates for the development of the recreation economy in the Connecticut River Valley in both VT and NH. We do this through advocating for recreational requirements of hydro-electric facilities in the region, creating connections between recreational opportunities in the river and local economies, and providing opportunities for collaboration between and among state and local entities.

Connecticut River Conservancy is very enthused to write this letter in support of the application by the Friends of River Park for the National Park Service's 2021 Rivers, Trails & Conservation Assistance program.

Connecticut River Conservancy is pleased to be one of the project partners in the growing coalition of stakeholders working towards the long-planned Greenway through West Lebanon, NH as was recently reported in the Valley News: "Group plots direction for trail through West Lebanon." <https://www.vnews.com/Coalition-forming-to-build-trail-through-West-Lebanon-38929827>

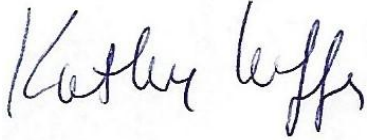
The 2013 update to the Connecticut River Joint Commission's Connecticut River Recreation Management Plan for the Upper Valley Region recommends, "The City of Lebanon and the local Rotary Clubs should continue to pursue redevelopment of the Westboro Rail Yard, including a riverside path and a car-top boat launch." The City of Lebanon and State of New Hampshire recently reached an important agreement to initiate the necessary demolition efforts at the former Westboro Rail Yard, a critical first-step towards carrying the success of the Mascoma River Greenway into and through downtown West Lebanon. A coalition of city officials, nonprofits and local businesses has formed to help guide these efforts, and we would benefit greatly from the assistance of the National Park Service.

Friends of River Park, a New Hampshire not-for-profit, now owns a 6-acre parcel along the Connecticut River that represents ½ a mile of river frontage and trails. The 6-acre parcel is one critical piece of the larger connectivity

puzzle. Friends of River Park is a member of the coalition and has agreed to be the applicant for this program.

As the CRC's River Steward for VT and NH, I look forward to working with the Friends of River Park and other stakeholders to take steps this year towards recreational connectivity that will connect downtown West Lebanon with the Connecticut River and the region's trail network. As the project proceeds the specific responsibilities of each group will become better defined, but CRC is excited to offer our support and organizational capacity to these efforts. Connecticut River Conservancy fully supports the proposed grant application.

Sincerely,

A handwritten signature in black ink that reads "Kathy Urffer". The signature is written in a cursive, flowing style.

Kathy Urffer
River Steward VT/NH



February 28, 2021

Helen Mahan, Program Manager
Conservation and Recreation Assistance Collective
NPS, Interior Region 1, North Atlantic-Appalachian
15 State Street, 10th Floor
Boston, MA 02109
Email: ner_rtca@nps.gov

Re: Support for West Lebanon Greenway and Friends of River Park application for the NPS Rivers, Trails & Conservation Assistance Program

Dear Ms. Mahan,

I write on behalf of Lyme Properties, the developer of River Park West Lebanon (www.riverparkwestlebanon.com), in strong support of the application by *Friends of River Park* to the Rivers, Trails & Conservation Assistance Program. Lyme and *Friends* work closely on designing and programming the public realm at River Park and believe the broader Greenway effort to be of paramount importance to achieving the recreational access and downtown revitalization goals of the West Lebanon community.

It would be reasonable to ask what a real estate development company is doing in this application! At Lyme we have long believed that incorporating public access and alternative transportation into our projects is critical to their sense of place, success, and sustainability. Lyme focuses on the master planning, permitting, and execution of transformative real estate projects, grounded in a philosophy of community-conscious development. We prioritize excellence in urban design, green buildings, and landscape design and our projects have established pioneering standards for architecture, land-use, and conservation. By example, our Kendall Square project won the 2006 EPA Phoenix Award for excellence in brownfield redevelopment and incorporated a former industrial canal by including a canoe/kayak launch onto the Charles River in East Cambridge.

During the initial Neighborhood Planning Process in 2007-2009 for what would become the River Park Master Plan the community clearly voiced their desire for public access to the Connecticut River and a network of trails. This built upon, and was heavily informed by, the initial 2004 study that illustrated the possibilities for the re-use of Westboro Yard. The resultant plans for River Park made trails a top priority, and we dedicated the entire 6-acre waterfront parcel as publicly accessible recreational space with aspirations of regional recreational connectivity.

I also now serve as Vice Chair of the West Lebanon Revitalization Advisory Committee, where we have prioritized the Greenway as a top priority in achieving the cultural, recreational, and economic revitalization of our riverside Central Business District. In both of these roles I am pleased to participate in the Greenway coalition and support this application by *Friends of River Park*.

Sincerely,
Chet Clem



Application Guidelines & Form



About Us

The National Park Service – Rivers, Trails and Conservation Assistance program (RTCA) supports community-led natural resource conservation and outdoor recreation projects across the nation. Our conservation and recreation planning professionals partner with community groups, nonprofit organizations, tribes, and government agencies. This partnership assists local communities in realizing their conservation and outdoor recreation vision and goals by providing a broad range of services and skills. National Park Service (NPS) staff share their expertise to help your team turn an idea into reality. We offer this assistance on an annual basis with extensions based on mutual agreement. *No monetary grants are made.*

National Park Service Mission

The National Park Service preserves unimpaired the natural and cultural resources and values of the National Park System for the enjoyment, education, and inspiration of this and future generations. The Park Service cooperates with partners to extend the benefits of natural and cultural resource conservation and outdoor recreation throughout this country and the world.

Our Focus Areas

Our projects typically fall within five focus areas, although we consider other projects that fall outside of these categories:

- **Build healthy communities through parks, trails, and outdoor opportunities:**
Improve access to outdoor recreation and park amenities on land and water that support healthy lifestyles for all users
- **Conserve natural lands, rivers, and watersheds:**
Strengthen the conservation and stewardship of public lands, waterways, and wildlife habitat
- **Engage youth in outdoor recreation and stewardship:**
Connect young people to the outdoors to develop a lifelong appreciation of recreation and nature
- **Strengthen the organizational capacity of project partners:**
Develop and strengthen effective and sustainable community organizations and partner groups
- **Support National Park Service and community networks:**
Facilitate strategic planning and collaboration between national parks and communities to achieve shared goals



Our Services

Our assistance is tailored to your needs. Examples of the types of assistance we provide are listed below. Visit our website to learn about current projects: <https://www.nps.gov/orgs/rtca/community-projects.htm>

- Define project vision and goals
- Inventory and map community resources
- Identify and analyze key issues and opportunities
- Engage collaborative partners and stakeholders
- Design community outreach and participation strategies
- Develop concept plans for trails, parks, and natural areas
- Set priorities and build consensus
- Identify funding strategies
- Develop a sustainable organizational framework to support the project
- Create project management and strategic action plans
- Coach teams, groups, and partnership networks

Application Process and Timeline

The application deadline is **March 1, 2021**. Consulting a program manager prior to the application deadline is *a requirement* to help identify how our expertise can complement your project and to answer questions regarding the application. Please see the contact list at the end of this application to identify the program manager who serves your state.

- Please contact the program manager for your state to discuss the proposed project and current application timeline.
- Email completed applications to the program manager who serves your state or contact them for guidance on mailing a printed version (*see list at the end of the application*)
- Please include the following in your Application Package:
 1. Completed application form
 2. Site location map
 3. A minimum of three commitment letters that describe each partner's role, responsibility, and contribution to the project
 4. Optional supplemental information that can help us learn more about your project (for example, background documents, media coverage, additional maps, list of links to resources, project photos, etc.)
- Project start times will be coordinated with applicants who have been selected for assistance.

Project Selection Criteria

Applications for support from the Rivers, Trails and Conservation Assistance program are competitively evaluated based on the following criteria:

- The project is expected to accomplish noticeable results that promote natural resource conservation or outdoor recreation in the near future.
- Roles and contributions of project partners are significant and well-defined.
- There is evidence of broad community support for the project.
- The project fits with our focus areas (although proposals falling outside these areas are considered).



Application Form

Date:

Project Name:

City and State:

Congressional District(s) Number(s):

Primary Applicant Organization(s):

Primary Contact:

Title:

Street Address:

City:

State/Territory:

Zip Code:

Email:

Daytime Phone:

Website (if applicable):

Please review focus area descriptions (on page 1) and project selection criteria (on page 2) for guidance on addressing the following questions. If additional space is needed for your responses, please use the extra pages at the end of this document. Contact the program manager for your state with questions or for additional information.

1. Project Summary

Address the following points concisely:

- a. Summary of project - Tell us about your project idea and the specific outcomes you would like to achieve:

2. Roles

a. Describe your organization, its role in the project, and the time and resources that will be contributed:

b. In the chart below, describe each partner's role, responsibility, and contribution to the project (please include partners providing letters of commitment):

Organization Name	Partner's Role, Responsibility, and Contribution

4. NPS Support Requested (continued)

- b. Describe the types of assistance and specific deliverables you are seeking from the NPS staff that would complement your team. *For examples, see the description of "Our Services" on page 2.*

5. How Did You Hear About Us?

Have you worked with Rivers, Trails and Conservation Assistance in the past? If not, how did you hear about our program (for example, from a colleague, online search, NPS website, grants.gov, social media, email, or other)?

6. Attachments

Please include the following attachments with this completed application:

- Site location map
- Commitment letters from 3 or more project partners
- Optional supplemental information that can help us learn more about your project (background documents, examples of media coverage, additional maps, list of links to resources, project photos, etc.)

Reminder: Ensure you have initiated contact with your individual state program manager for guidance prior to submittal (see below for contact information - for a list of current program managers, please visit: www.nps.gov/orgs/rtca/contactus.htm).

Submitting Your Application

After the application is completed, email your application materials to the program manager for your state, or contact them for guidance on mailing a printed version.

American Samoa – pwr_rtca@nps.gov

Alabama – ser_rtca@nps.gov

Alaska – akr_rtca@nps.gov

Arizona – rtca_apps_imr@nps.gov

Arkansas – mwr_rtca@nps.gov

California – pwr_rtca@nps.gov

Colorado – rtca_apps_imr@nps.gov

Connecticut – ner_rtca@nps.gov

Delaware – ner_rtca@nps.gov

District of Columbia (and metropolitan area) –
ncr_rtca@nps.gov

Florida – ser_rtca@nps.gov

Georgia – ser_rtca@nps.gov

Guam – pwr_rtca@nps.gov

Hawaii – pwr_rtca@nps.gov

Idaho – pwr_rtca@nps.gov

Illinois – mwr_rtca@nps.gov

Indiana – mwr_rtca@nps.gov

Iowa – mwr_rtca@nps.gov

Kansas – mwr_rtca@nps.gov

Kentucky – ser_rtca@nps.gov

Louisiana – ser_rtca@nps.gov

Maine – ner_rtca@nps.gov

Maryland – ner_rtca@nps.gov

Massachusetts – ner_rtca@nps.gov

Michigan – mwr_rtca@nps.gov

Minnesota – mwr_rtca@nps.gov

Mississippi – ser_rtca@nps.gov

Missouri – mwr_rtca@nps.gov

Montana – rtca_apps_imr@nps.gov

Nebraska – mwr_rtca@nps.gov

Nevada – pwr_rtca@nps.gov

New Hampshire – ner_rtca@nps.gov

New Jersey – ner_rtca@nps.gov

New Mexico – rtca_apps_imr@nps.gov

New York – ner_rtca@nps.gov

North Carolina – ser_rtca@nps.gov

North Dakota – mwr_rtca@nps.gov

Northern Mariana Islands - pwr_rtca@nps.gov

Ohio – mwr_rtca@nps.gov

Oklahoma – rtca_apps_imr@nps.gov

Oregon – pwr_rtca@nps.gov

Pennsylvania – ner_rtca@nps.gov

Puerto Rico – ser_rtca@nps.gov

Rhode Island – ner_rtca@nps.gov

South Carolina – ser_rtca@nps.gov

South Dakota – mwr_rtca@nps.gov

Tennessee – ser_rtca@nps.gov

Texas – rtca_apps_imr@nps.gov

Utah – rtca_apps_imr@nps.gov

Vermont – ner_rtca@nps.gov

U.S. Virgin Islands – ser_rtca@nps.gov

Virginia – ner_rtca@nps.gov

Washington – pwr_rtca@nps.gov

West Virginia – ner_rtca@nps.gov

Wisconsin – mwr_rtca@nps.gov

Wyoming – rtca_apps_imr@nps.gov