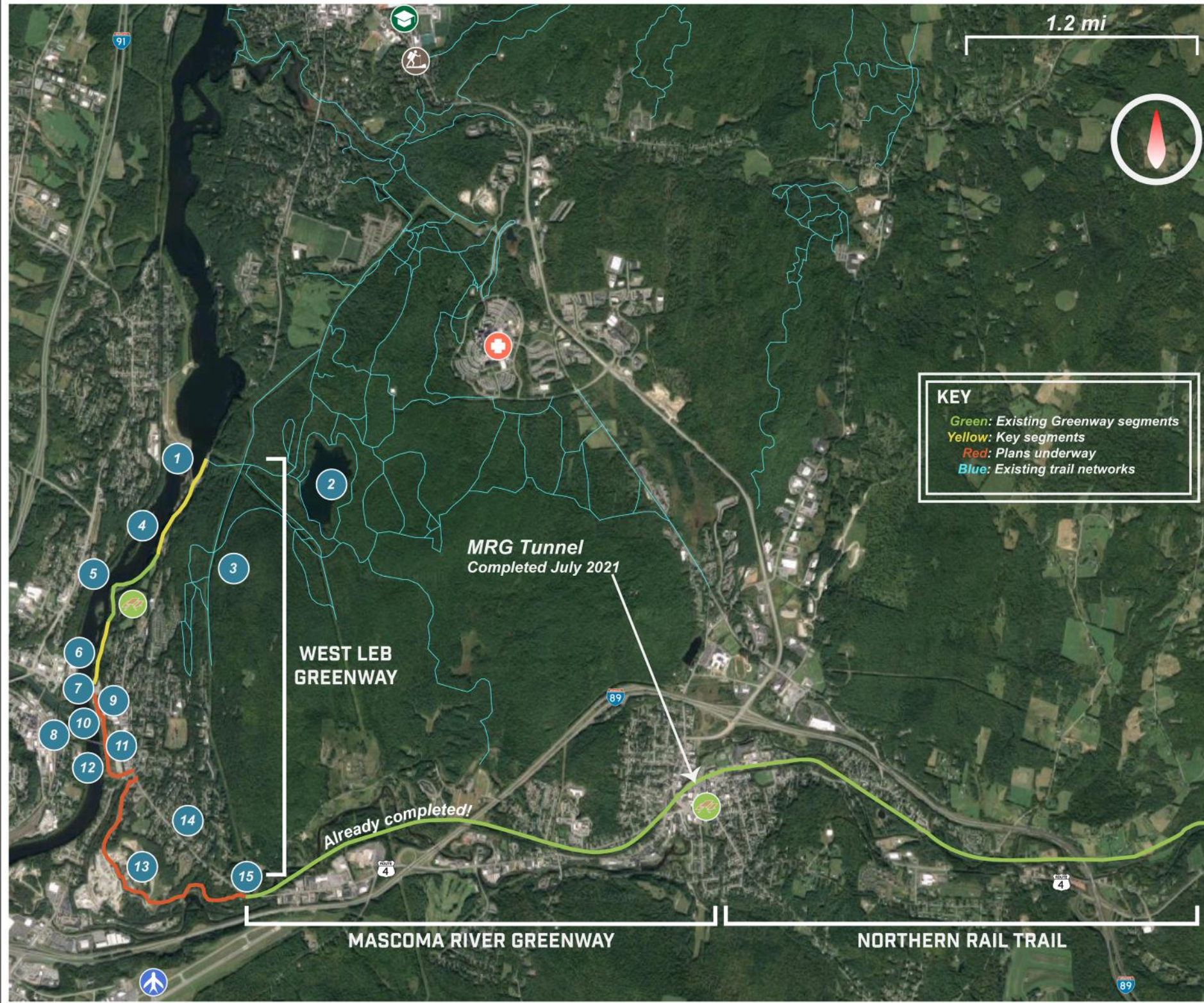


TRAIL ROUTE SECTIONS

- 1 **Wilder Hydro. Dam**
 - The Wilder Dam is currently undergoing FERC re-licensing, which will have ecological impacts and public recreational opportunities.
- 2 **Boston Lot Lake & Conservation Area**
 - Over 7 miles of trails connecting to DHMC, lake trails, and points north.
- 3 **Dartmouth's Landmark Parcel**
 - Existing trail network maintained by Upper Valley Mountain Bike Association. (UVMBA)
- 4 **Wilder Dam to River Park**
 - There are three privately-owned parcels representing 450' of river frontage that will require trail easements.
- 5 **Friends of River Park**
 - 6 Acre riverfront parcel with 1/2 mile of trails owned by non-profit Friends of River Park.
 - Trails improved in 2021 with UVTA Summer Trail camps.
- 6 **Greenway Street & Lincoln Avenue**
 - 1912 plans show a 30-foot wide "Greenway Street" and "Lincoln Avenue," allowing for a contiguous corridor running from the southern boundary of River Park to Bridge Street (Route 4).
- 7 **Lyman Bridge & Connections to WRJ**
 - There exists a pedestrian underpass under Lyman bridge for the Greenway. Lyman bridge provides connections to White River Junction.
- 8 **Bridge Street Park**
 - The waterfront park is owned by the City of Lebanon and will be part of trail and park network.
- 9 **Westboro Yard Pathway**
 - The 2004 Westboro Riverfront Park Design Study identified the City of Lebanon's existing sewer line easement to create a path along the riverfront.
- 10 **Rail Bridge Underpass**
 - There currently exists an unimproved (but visibly utilized) trail passing beneath the New England Central Railroad Bridge; being analyzed by the City.
- 11 **Westboro Yards Waterfront Park**
 - In 2018 the City of Lebanon proposed a 99-year lease of a portion of the Westboro Yards from the NHDOT, calling for the demolition of the dilapidated structures and allowing for recreational improvements along the waterfront.
- 12 **MRG Extension Options**
 - A 2017 Thayer study identified three options: Via the proposed Iron Horse Development, South Main Street, or a Rail-With-Trail option continuing down the Claremont Concord Railroad corridor.
- 13 **Seminary Hill Shortcut: The Sidewalk**
 - The contiguous sidewalk running from the current terminus of the MRG to downtown West Lebanon can serve as an interim option.
- 14 **Current Terminus of the MRG**
 - The Mascoma River Greenway is a 4 mile pathway starting from the terminus of the Northern Rail Trail at Spencer Street in downtown Lebanon, NH to West Lebanon's Rt. 12-A and Seminary Hill.

WEST LEBANON GREENWAY



LEARN MORE: INTERACTIVE MAP



Explore online with our interactive story-map.

WWW.WESTLEB.ORG/GREENWAY

TAKE ACTION: WESTBORO PETITION



We Want Our Waterfront.

Add your voice to the call for improvement in West Leb.

WWW.WESTLEB.ORG/PETITION

YOUR VOICES: MRG SURVEY RESULTS



A 2020 Survey completed by the UVLSRPC measured the use of the completed MRG, showing strong community support for extending the greenway to West Leb.

WWW.WESTLEB.ORG/SURVEY

THE OPPORTUNITY:
This project is an opportunity to execute upon years of planning and public opinion. The West Lebanon Greenway would bring recreation improvements and help economic development in West Leb.

PREPARED BY:

WESTLEB.ORG/GREENWAY

A GROWING COALITION OF PARTNERS:

